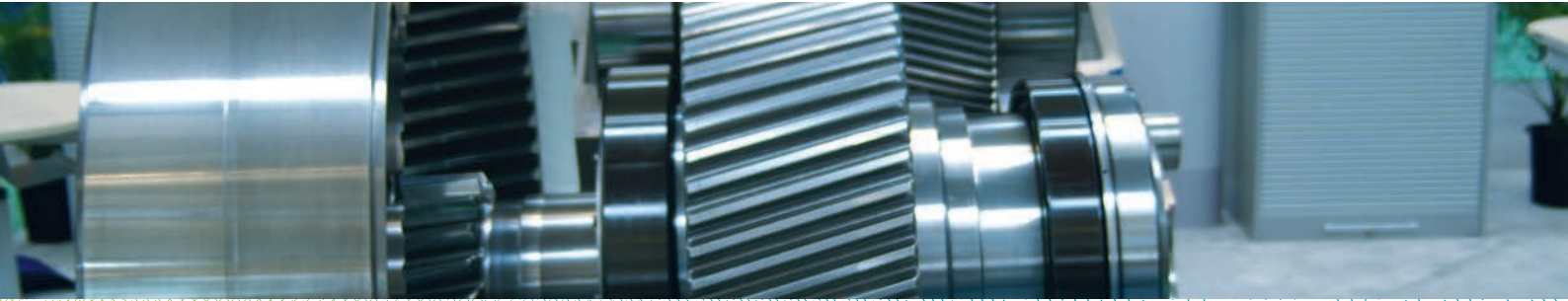


Gear inspection



Energy lives here™

► Discovering gear conditions can help you make valuable improvements to extend system life and performance.

Description

Our engineers inspect, report and document the condition of gears, bearings, lubricants, lubrication systems, seals and housings of critical enclosed gear units. The inspection results can improve the life and performance of gear units, as well as estimate gear life and the impact of recommended improvements in operation and maintenance.

Application

We work with you to:

- Identify critical gear units and learn about current performance and opportunities
- Schedule gear inspections during planned plant or system outages
- Allow for inspections during unscheduled outages or failures
- Record component conditions using standard procedures and document and communicate wear trends
- Compare results with previous inspection data, and industry and equipment benchmarks
- Document recommendations and justify with return on investment/total cost of ownership
- Present and distribute the complete report to plant management

Potential benefits



Minimized unscheduled downtime



Minimized maintenance labor costs



Minimized gear replacements



Increased productive capacity of equipment

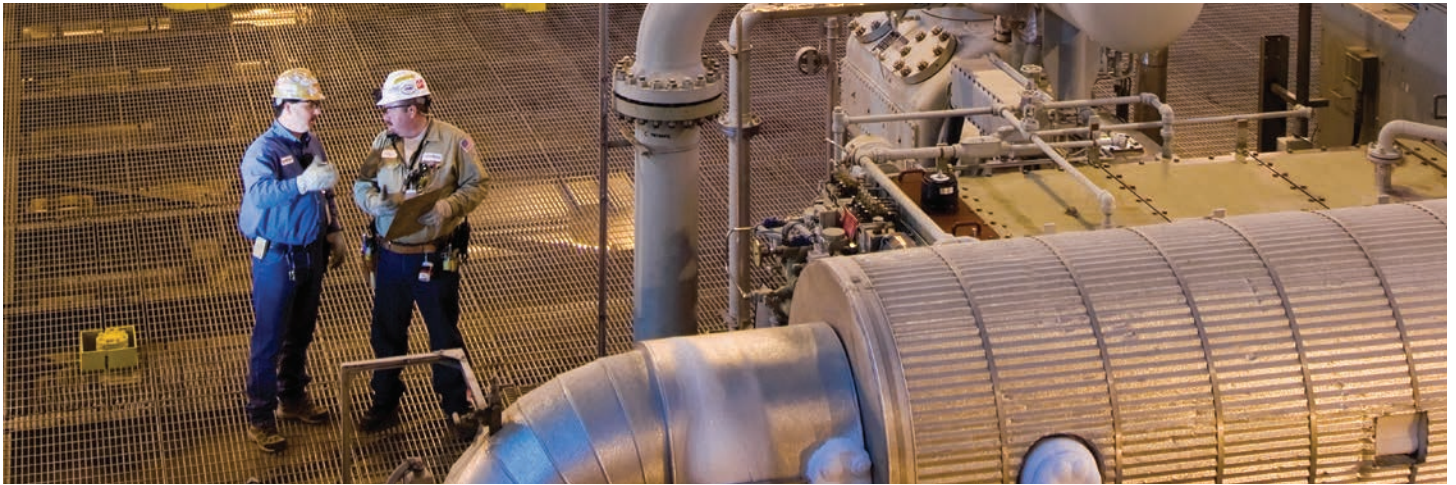


Effective maintenance control



Enhanced safety and environmental practices

Gear inspection



Deliverable: The Engineering Service Report outlines gearbox condition, recommends corrective actions and improvements to operational or maintenance procedures. The report will include photographs of wear pattern, interpretation and value of service rendered.

Common opportunity areas

- Identification of best lubricant for your application
- Abnormal operation temperatures
- Lubricant contamination
- Overloading of gear units
- Misalignment of gears
- Coupling malfunctions
- Desire to extend oil drain interval
- Filtration practices

Safety, health and environment

Our field engineers are attuned to the hazards of handling, storing and using petroleum products, and strictly observe safety and environmental rules and ExxonMobil safety practices. They coordinate efforts through designated plant personnel – verifying electrical and mechanical lockout and proper tagging prior to working on equipment, and providing recommendations to help reduce hazards.

Industrial
Lubricants



By helping you enhance equipment life and reliability – which minimizes maintenance costs and downtime – our expert services can help you achieve your safety, environmental care and productivity goals.